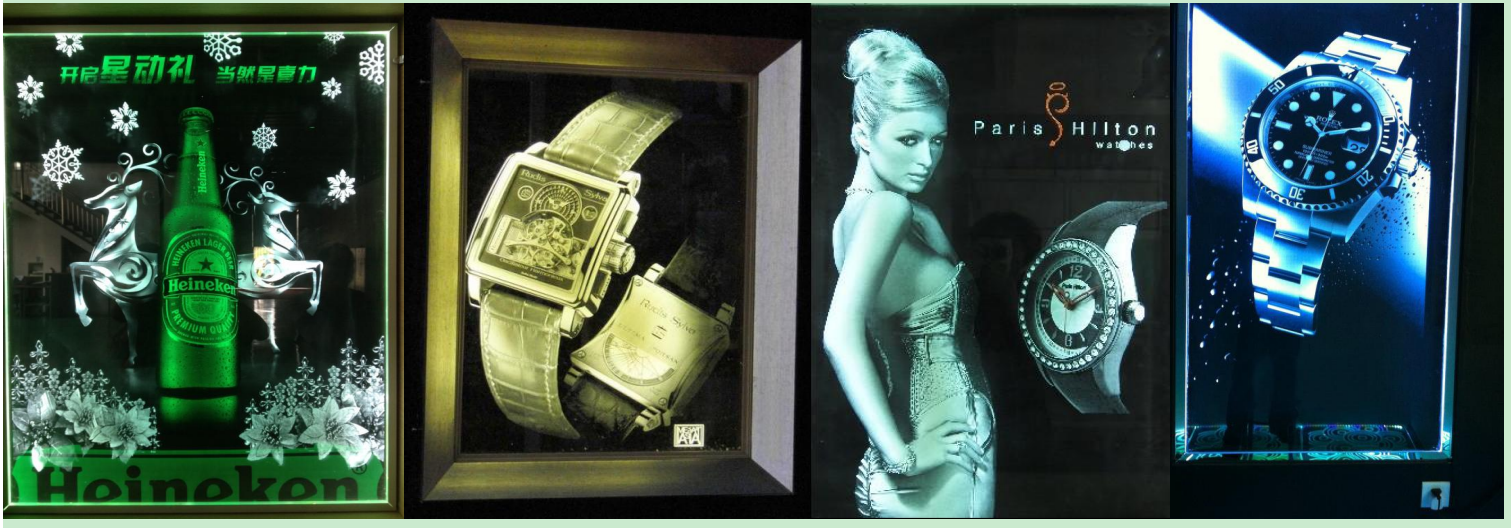
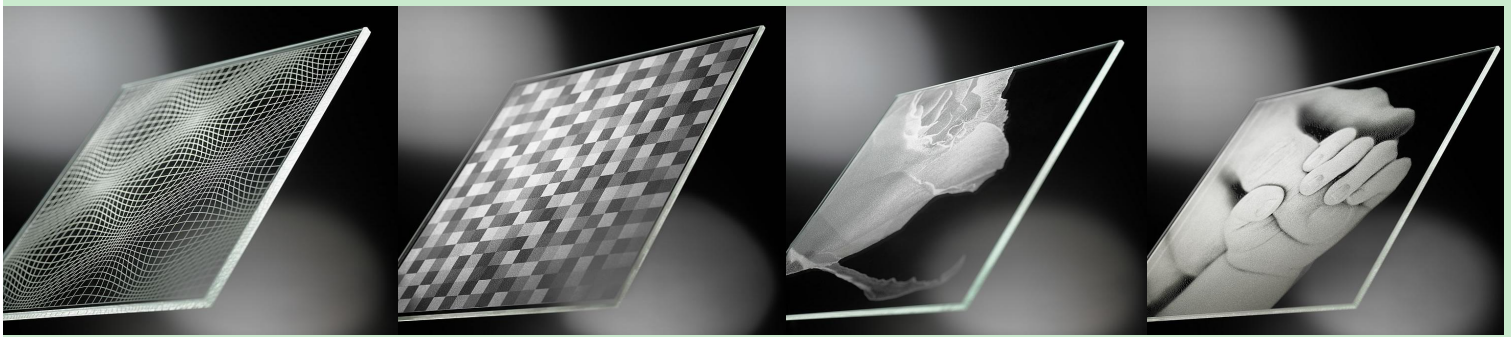
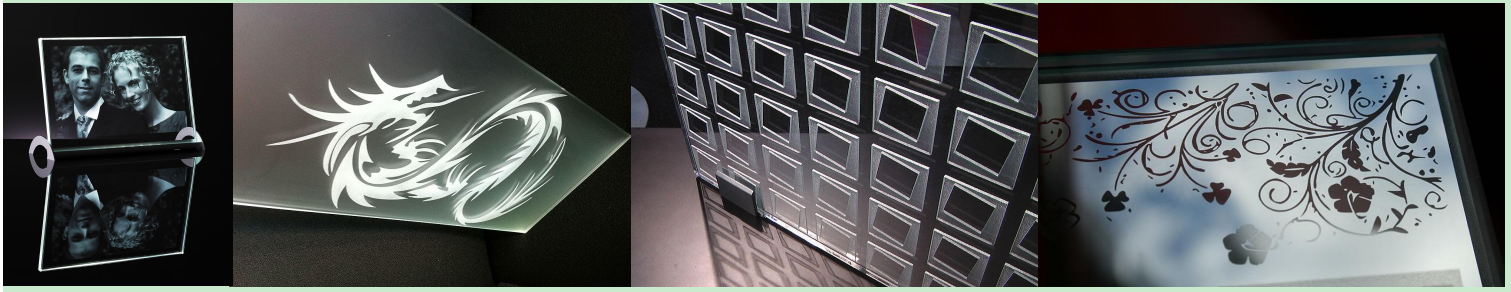
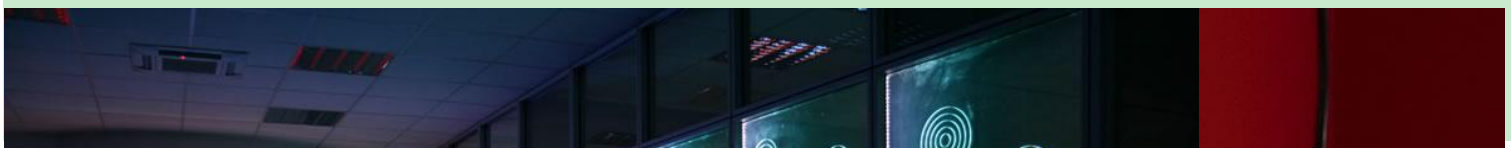
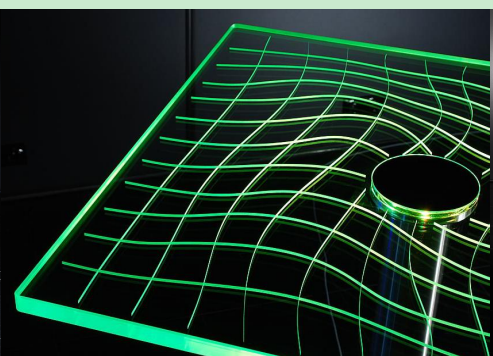
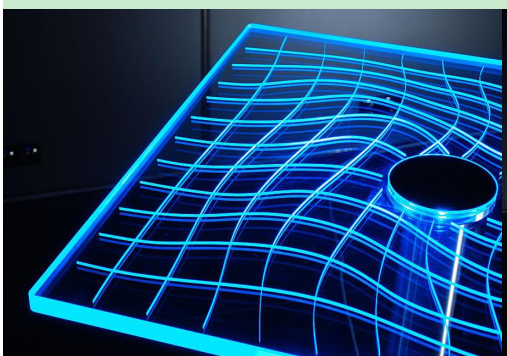
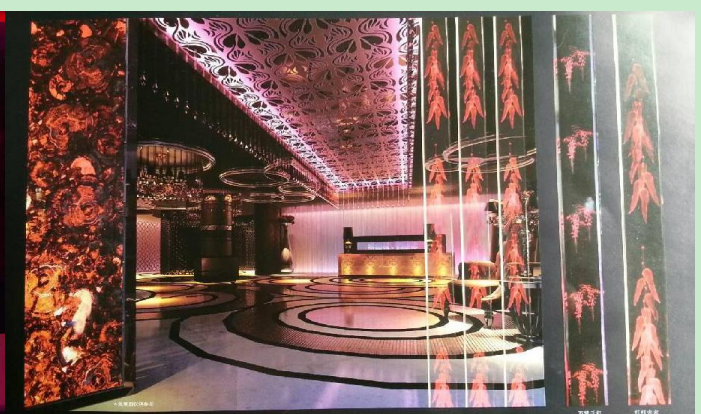
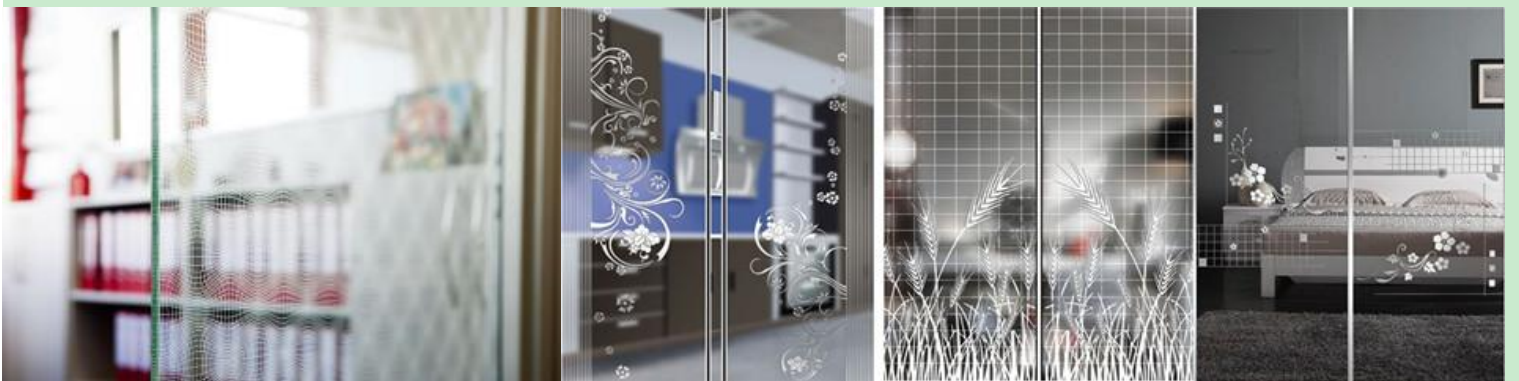


SAMPLE GALLERY











WISELY LASER MACHINERY LIMITED

No. 7 Building, No. 5 Industry Zone Shutianpu, Matian
 Guangming New District, Shenzhen 518106 China
 T: +86-755-32998419 E: sales@wwlaser.hk W: www.wwlaser.com
 智·信·銳意·敢擔當——威爾斯利激光

Glass Laser Marking Machine

Feature

1. Environmental protection. No water, no fume, no smoke, no dust, no chemistry material and very low noise while working.
2. Low cost to process, Low power consumption, mass production available.
3. High marking/engraving speed, high processing efficiency, High flatness, less than 0.3mm.
4. Superfine marking/engraving effect, the finished product can be displayed in high-end places.
5. Easy operation, 3-days training for a new beginner is enough, one operator can control 5 sets of machine.
6. Humanization design, convenient to load & unload glass via 50 pcs of universal wheels and air cylinder which controls the work table.
7. Long lifespan, one machine can be used for more than 3 years.

Applicable Material

1. Glass
2. Crystal
3. Acrylic

Applicable Industry

1. Advertising
2. Building partition decoration
3. Household appliances
4. Home furnishings
5. Art photo viewing
6. Industrial glass design and so on.

Technical Parameters



**Flat Glass Engraving
 2D/3D Crystal Engraving
 Transparent Acrylic Engraving**



Type	MY-M1280G	MY-M1325G	MY-M1530G
Marking Area	1200*800*110mm	2500*1300*110mm	3000*1500*110mm
Frequency		4500HZ	
Marking Speed		280 000 dots/min	
Laser Source		Semiconductor DIODE	
Laser Wavelength		532NM	
Max. Pulse Energy		1.2mj	
Beam Quality		m ² < 1.5	
Pulse Width		7ns	
Engraving Dot Space	0.06-0.12mm	0.06-0.12mm	0.08-0.15mm
Dot Size in glass/acrylic	40-80µm	80-120µm	80-120µm

Resolution	800-1200 DPI		
Quantity of Laser Head	ONE		
Axis-Moving	X, Y, Z + galvo scanner XY		
X, Y and Z axis	Taiwan Ballscrew and Linear Guiderail		
Positioning Accuracy	<0.02mm		
Repeating Positioning Accuracy	±0.001mm		
Lifespan of Laser Souce	25000 hours		
Continous Working Time	24Hrs / Day		
Software	Independent-development software for 3D, 2D dots cloud and machine control		
Software Language	English, Portuguese, Russian, Arabic and Chinese		
Cooling Mode	Air cooling		
Operation Environment	Temperature 15°C-30°C, Humidity 10-70%, non-condensed		
Power Input	AC220V / 50HZ / 1-PH / 5A or 110V / 60HZ / 1-PH / 5A		
Computer Requested	There will be one PC with the machine		
Power Comsuption	1500W	1800W	1800W
Dimesion	1650*1850*1750mm	1950*2000*2750mm	2000*3300*2750mm
Package Size	1800*2020*1900mm	1760*3280*1750mm	2200*3450*2900mm
Net Weight (approximate)	600KG	1500KG	1700KG
Gross Weight (approximate)	800KG	1900KG	2200KG

Shipment

We will effect shipment within **12 working days** after receiving your payment.

Packaging

For MY-M1280G: 1 Plywood Case for machine + 1 Plywood Case for control box

For MY-M1325G/1530G: ONLY one Plywood Case for whole machine

Warranty

24-month warranty period.

Training

7-working-day training in the factory free of charge.

Service

Local Service in your workshop is available, need further negotiation.

Samples

Free samples available.

Extended Service:

1. Supply 500 designed files for free:



2. Introduce the crystal factory to get blank crystal with good price.

